



TRANSPORTATION CABINET

Frankfort, Kentucky 40622
www.transportation.ky.gov/

Steven L. Beshear
Governor

Michael W. Hancock, P.E.
Secretary

January 25, 2012

CALL NO. 102
CONTRACT ID NO. 121001
ADDENDUM # 3

Subject: Pike County, APD 0806 (040)
Letting January 27, 2012

- (1) Revised - Plan Sheets - R2H, R2S & R118
- (2) Revised - Special Notes - Page 19 of 88
- (3) Revised - Bid Items - Pages 84-88 of 88

Proposal revisions are available at <http://transportation.ky.gov/contract/>.
Plan revisions are available at <http://www.lynnimaging.com/kytransportation/>.

If you have any questions, please contact us at 502-564-3500.

Sincerely,

A handwritten signature in blue ink that reads "Ryan Griffith".

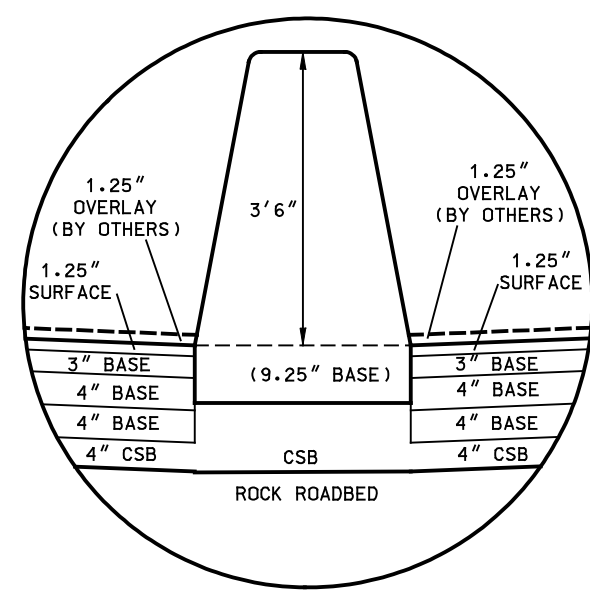
Ryan Griffith
Director
Division of Construction Procurement

RG:ks
Enclosures

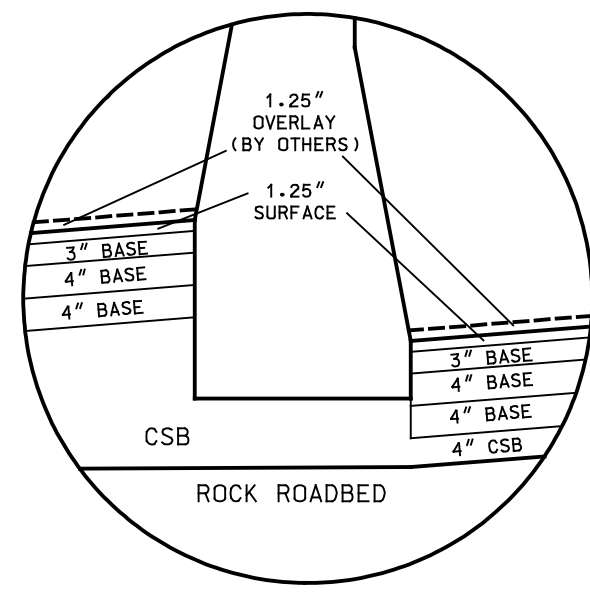


An Equal Opportunity Employer M/F/D

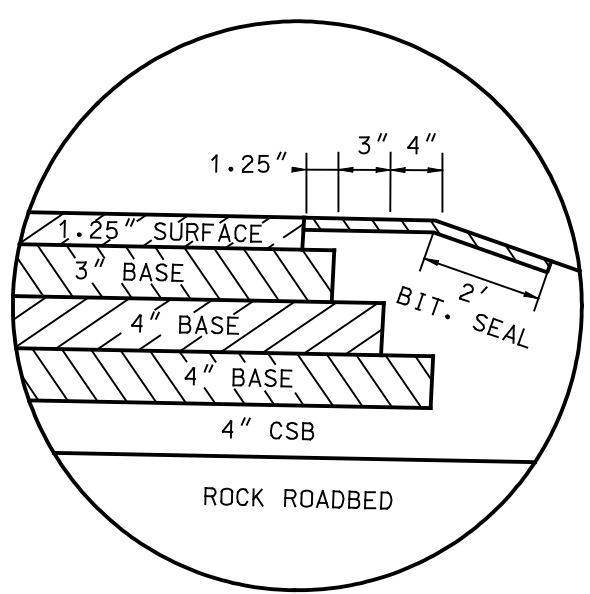
- ① SEE CROSS SECTIONS FOR SLOPES OUTSIDE THE LIMITS OF THE SHOULDERS
- ② SHOULDERS SHALL BE WIDENED 3' WHERE GUARDRAIL IS REQUIRED
- ③ SUPERELEVATED SHOULDERS: CONSTRUCT TO STANDARD SUPERELEVATION EXCEPT NOT FLATTER THAN 4.0%
- ④ EXTEND SHOULDER PAVEMENT TO FACE OF GUARDRAIL, WHERE PRESENT
- ⑤ SHOULDER SLOPE TO BE ADJUSTED AS NEEDED NEAR THE DROP BOX INLETS TO MEET THE TOP OF GRATE ELEVATIONS AND CONTINUE TO DRAIN ALONG THE WALL.



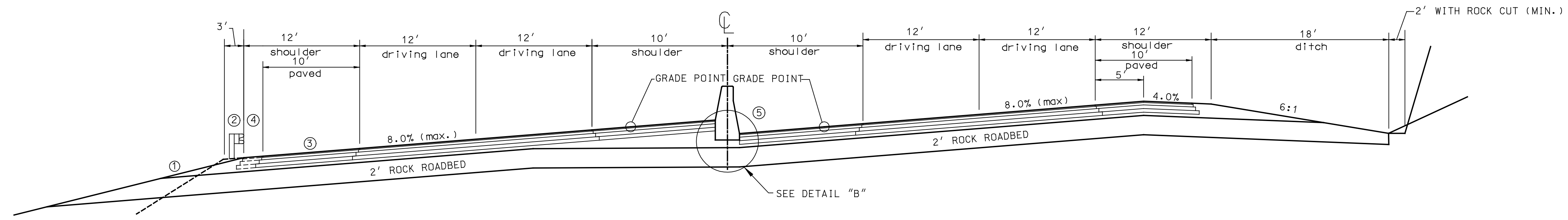
DETAIL "C"
NOT TO SCALE



DETAIL "B"
NOT TO SCALE

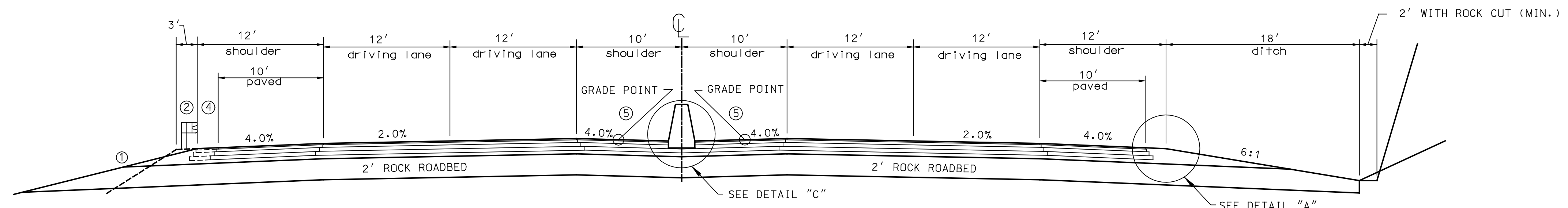


DETAIL "A"
NOT TO SCALE



SUPERELEVATED SECTION MAINLINE

SEE CROSS SLOPE SUMMARY SHEETS FOR SUPERELEVATION LOCATIONS AND TRANSITIONS (SHEETS 2M-2R)



NORMAL SECTION MAINLINE

SEE CROSS SLOPE SUMMARY SHEETS FOR SUPERELEVATION LOCATIONS AND TRANSITIONS (SHEETS 2M-2R)

LANE ADDITIONS AND TRANSITIONS

BEGIN STATION / WIDTH	END TAPER STATION / WIDTH	OUTER SHOULDER WIDTH	WESTBOUND ACCEL/DECEL OR TRUCK CL. LANE	WESTBOUND INNER LEFT TURN LANE	LEFT MEDIAN WIDTH	RIGHT MEDIAN WIDTH	EASTBOUND INNER LEFT TURN LANE	EASTBOUND ACCEL/DECEL OR TRUCK CL. LANE	OUTER SHOULDER WIDTH
345+00	0.0'	*	12'	6'	12'				
348+50	12'	350+30	0.0'	12'	0.0'				
377+00	0.0'	380+00	12'	12'					
380+15	0.0'	383+15	12'						12'
400+50	12'	403+50	0.0'					0.0'	
409+75	20'	415+75	10'		10'	10'			
463+00	10'	469+00	20'		20'	20'			
469+25	0.0'	472+25	12'		12'				
470+65	0.0'	472+65	12'					12'	6'
476+75	12'	478+25	18'		18'				
479+00	12'	*	0.0'					0.0'	12'
479+00	18'	*	12'		12'				
485+35	12'	487+15	0.0'		0.0'				
488+45	0.0'	491+45	12'	12'					
495+55	0.0'	498+55	12'					12'	
504+55	12'	507+55	18'	18'					
505+00	12'	*	0.0'					0.0'	
507+55	18'	*	0.0'	0.0'					
507+92	0.0'	*	17'					17'	
507+92	17'	510+42	12'					12'	
510+25	0.0'	*	12'	12'					
514+52	12'	517+52	0.0'					0.0'	
514+85	12'	517+85	0.0'	0.0'					

* BEGINS/ENDS/TRANSITIONS ACROSS AN INTERSECTION

US 460 MAINLINE PAVEMENT DESIGN

- 1.25" SURFACE
- 15" BASE
- 1.25" DEPTH CLASS 3 STONE MATRIX ASPHALT SURFACE 0.38A PG76-22
- 3" DEPTH CLASS 3 STONE MATRIX ASPHALT BASE 1.0D PG76-22
- 8" (4" + 4") DEPTH CLASS 3 ASPHALT BASE 1.0D PG64-22
- 4" CRUSHED STONE BASE
- 2' ROCK ROAD BED

US 460 SHOULDER PAVEMENT DESIGN

- 1.25" SURFACE
- 15" BASE
- BIT. SEAL COAT
- 1.25" DEPTH CLASS 2 ASPHALT SURFACE 0.38D PG64-22
- 11" (3" + 4" + 4") DEPTH CLASS 2 ASPHALT BASE 1.0D PG64-22
- 4" CRUSHED STONE BASE
- FULL DEPTH CRUSHED STONE BASE
- 2.4 LB/SY EMULSIFIED ASPHALT RS-2
- 20 LB/SY ASPHALT SEAL AGGREGATE (TWO APPLICATIONS)
- 2' ROCK ROAD BED

NOTE: A FUTURE SURFACE OVERLAY OF 1.25" WILL BE APPLIED TO THIS (ENGLISH) PORTION OF THE PROJECT (UNDER A SEPARATE CONTRACT), BRINGING THE TOTAL FINAL PAVEMENT DEPTH TO 17.5". ALL GRADE POINT ELEVATIONS ARE TO BE REDUCED BY 1.25", EXCEPT WHERE TRANSITIONING TO MEET BRIDGES AND PREVIOUSLY PAVED AREAS. (SEE NOTES ON PROFILES AND PAVEMENT DETAIL SHEETS.)

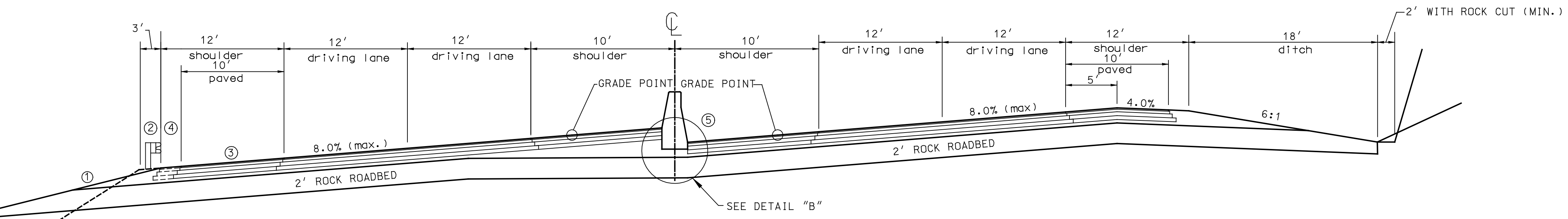
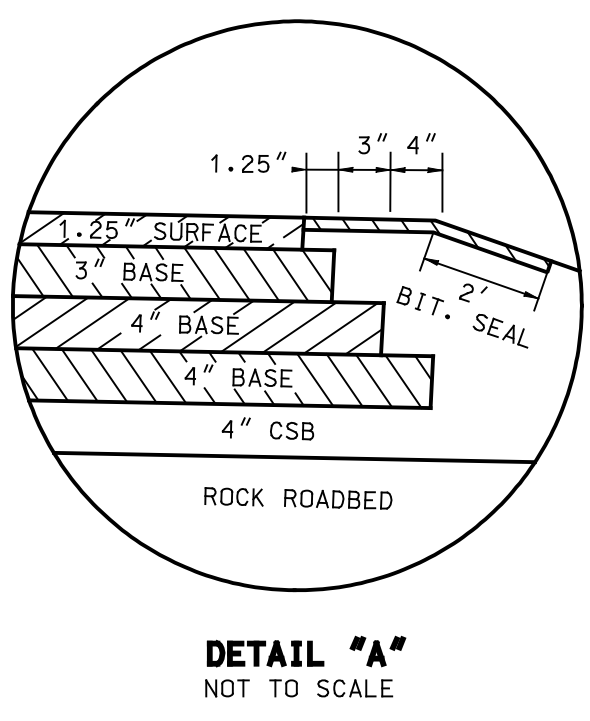
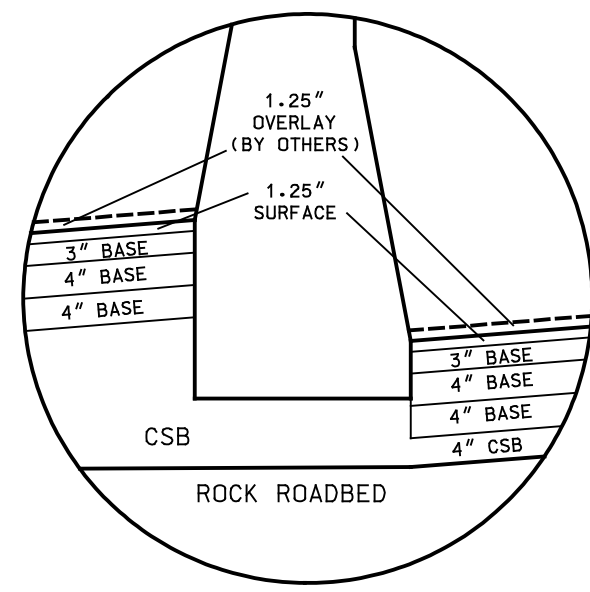
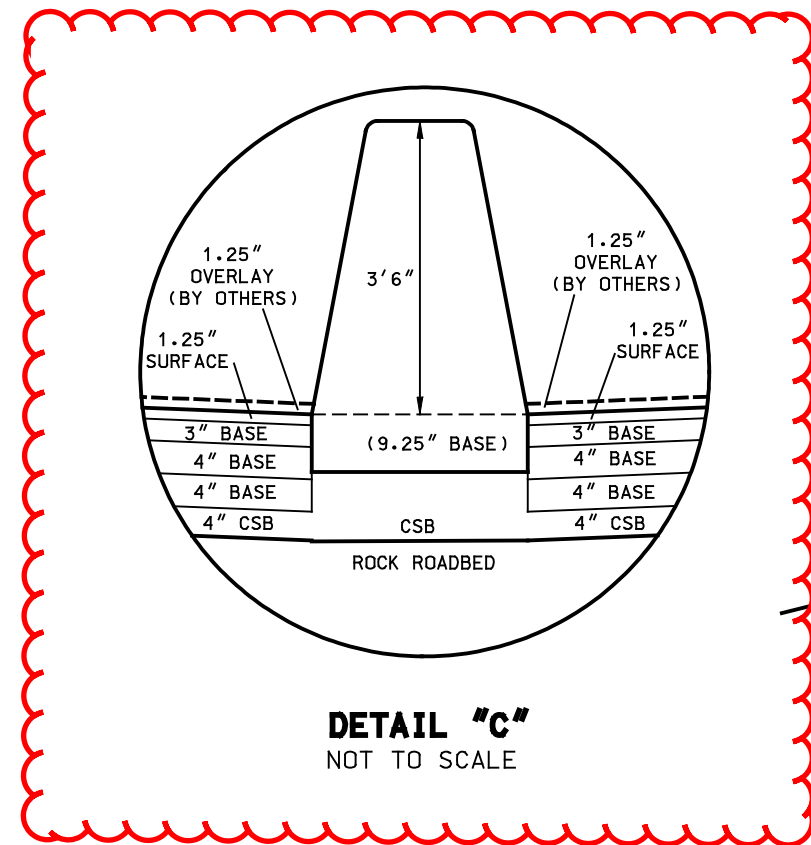
PREPARED BY _____ DATE _____
 CHECKED BY _____ DATE _____
 APPROVED BY _____ DATE _____

Cell Library: PEC-3D.CEL
 Cell Name: PIKEPL
 1/23/2012
 TYPICAL-DGN
 6-93 FORM NO. 2m

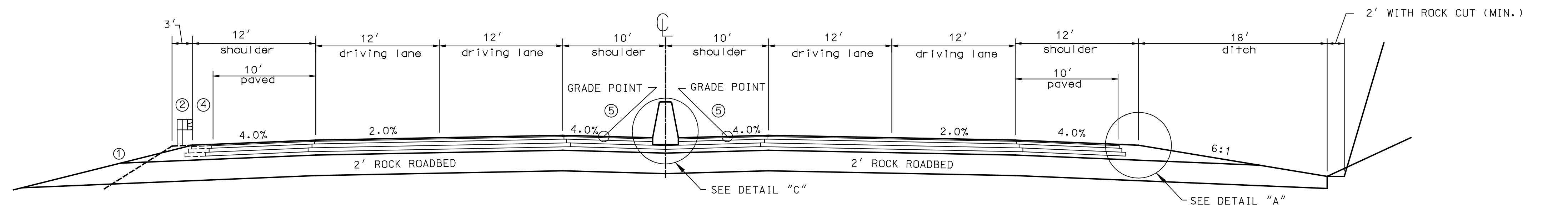
1 REVISED 01-23-2012

- ① SEE CROSS SECTIONS FOR SLOPES OUTSIDE THE LIMITS OF THE SHOULDERS
- ② SHOULDERS SHALL BE WIDENED 3' WHERE GUARDRAIL IS REQUIRED
- ③ SUPERELEVATED SHOULDERS: CONSTRUCT TO STANDARD SUPERELEVATION EXCEPT NOT FLATTER THAN 4.0%
- ④ EXTEND SHOULDER PAVEMENT TO FACE OF GUARDRAIL, WHERE PRESENT

⑤ SHOULDER SLOPE TO BE ADJUSTED AS NEEDED NEAR THE DROP BOX INLETS TO MEET THE TOP OF GRATE ELEVATIONS AND CONTINUE TO DRAIN ALONG THE WALL.



SUPERELEVATED SECTION MAINLINE
SEE CROSS SLOPE SUMMARY SHEETS FOR SUPERELEVATION LOCATIONS AND TRANSITIONS (SHEETS 2M-2R)



NORMAL SECTION MAINLINE
SEE CROSS SLOPE SUMMARY SHEETS FOR SUPERELEVATION LOCATIONS AND TRANSITIONS (SHEETS 2M-2R)

PREPARED BY _____ DATE _____
CHECKED BY _____ DATE _____
APPROVED BY _____ DATE _____

Cell Library: PEC-3D.CEL
Cell Name: PIKEPL
1/23/2012
6-93 FORM NO. 2m

US 460 MAINLINE PAVEMENT DESIGN

- 1.25" SURFACE
- 15" BASE
- 1.25" DEPTH CLASS 3 STONE MATRIX ASPHALT SURFACE 0.38A PG76-22
- 3" DEPTH CLASS 3 STONE MATRIX ASPHALT BASE 1.0D PG76-22
- 8" (4" + 4") DEPTH CLASS 3 ASPHALT BASE 1.0D PG64-22
- 4" CRUSHED STONE BASE
- 2' ROCK ROAD BED

US 460 SHOULDER PAVEMENT DESIGN

- 1.25" SURFACE
- 15" BASE
- BIT. SEAL COAT
- 1.25" DEPTH CLASS 2 ASPHALT SURFACE 0.38D PG64-22
- 11" (3" + 4" + 4") DEPTH CLASS 2 ASPHALT BASE 1.0D PG64-22
- 4" CRUSHED STONE BASE
- FULL DEPTH CRUSHED STONE BASE
- 2.4 LB/SY EMULSIFIED ASPHALT RS-2
- 20 LB/SY ASPHALT SEAL AGGREGATE (TWO APPLICATIONS)
- 2' ROCK ROAD BED

NOTE: A FUTURE SURFACE OVERLAY OF 1.25" WILL BE APPLIED TO THIS (ENGLISH) PORTION OF THE PROJECT (UNDER A SEPARATE CONTRACT), BRINGING THE TOTAL FINAL PAVEMENT DEPTH TO 17.5". ALL GRADE POINT ELEVATIONS ARE TO BE REDUCED BY 1.25", EXCEPT WHERE TRANSITIONING TO MEET BRIDGES AND PREVIOUSLY PAVED AREAS. (SEE NOTES ON PROFILES AND PAVEMENT DETAIL SHEETS.)

LANE ADDITIONS AND TRANSITIONS

BEGIN STATION / WIDTH	TAPER	END TAPER STATION / WIDTH	OUTER SHOULDER WIDTH	WESTBOUND ACCEL/DECEL OR TRUCK CL. LANE	WESTBOUND INNER LEFT TURN LANE	LEFT MEDIAN WIDTH	RIGHT MEDIAN WIDTH	EASTBOUND INNER LEFT TURN LANE	EASTBOUND ACCEL/DECEL OR TRUCK CL. LANE	OUTER SHOULDER WIDTH
345+00	0.0'	*	12'	6'	12'					
348+50	12'	350+30	0.0'	12'	0.0'					
377+00	0.0'	380+00	12'	12'						
380+15	0.0'	383+15	12'							12'
400+50	12'	403+50	0.0'						0.0'	
409+75	20'	415+75	10'			10'	10'			
463+00	10'	469+00	20'			20'	20'			
469+25	0.0'	472+25	12'			12'				
470+65	0.0'	472+65	12'						12'	6'
476+75	12'	478+25	18'			18'				
479+00	12'	*	0.0'						0.0'	12'
479+00	18'	*	12'			12'				
485+35	12'	487+15	0.0'			0.0'				
488+45	0.0'	491+45	12'	12'						
495+55	0.0'	498+55	12'						12'	
504+55	12'	507+55	18'	18'						
505+00	12'	*	0.0'						0.0'	
507+55	18'	*	0.0'	0.0'						
507+92	0.0'	*	17'						17'	
507+92	17'	510+42	12'						12'	
510+25	0.0'	*	12'	12'						
514+52	12'	517+52	0.0'						0.0'	
514+85	12'	517+85	0.0'	0.0'						

1 MODIFIED BARRIER WALL BASE THICKNESS IN DETAIL 'C'

NOT TO SCALE
TYPICAL

GENERAL SUMMARY

COUNTY OF	ITEM NO.	SHEET NO.
PIKE	12-263.49	R02S

ITEM CODE	ITEM	UNIT	METRIC SECTION		UNIT	ENGLISH SECTION		TOTAL PROJECT
			KY122 BRIDGE TO GREASY CR BRIDGE	(ENGLISH) (EQUIV)		GREASY CR BRIDGE TO KY195		
20	TRAFFICBOUND BASE (4)	M TON	50	55.12	TON	50		105.12
1891	ISLAND HEADER CURB TYPE 2	M	22.80	74.80	LF	350		424.80
1982	DELINEATOR FOR GUARDRAIL - WHITE	EACH			EACH	12		12
1983	DELINEATOR FOR GUARDRAIL - YELLOW	EACH	11	11	EACH	10		21
1985	DELINEATOR FOR BARRIER - YELLOW	EACH			EACH	60		60
2014	BARRICADE - TYPE III (1)	EACH			EACH	22		22
2242	WATER (7)	CU M			M GAL			3315
2351	GUARDRAIL STEEL W BEAM SINGLE FACE	M	1653.50	5425.00	LF	15290		20715
2352	GUARDRAIL STEEL W BEAM DOUBLE FACE	M	58.3	191.27	LF	687.50		878.77
2360	GUARDRAIL TERMINAL SECTION NO. 1	EACH	2	2	EACH	6		8
2363	GUARDRAIL CONNECTOR TO BRIDGE END TYPE A	EACH	6	6	EACH	12		18
2365	CRASH CUSHION TYPE IX-A	EACH	1	1	EACH	5		6
2367	GUARDRAIL END TREATMENT TYPE 1	EACH	15	15	EACH	25		40
2369	GUARDRAIL END TREATMENT TYPE 2A	EACH	7	7	EACH	18		25
2371	GUARDRAIL END TREATMENT TYPE 7	EACH	1	1	EACH			1
2387	GUARDRAIL CONNECTOR TO BRIDGE END TYPE A-1	EACH	1	1	EACH	3		4
2483	CHANNEL LINING CLASS II (2)	M TON	63.5	70.00	TON	88		158.00
2483	CHANNEL LINING CLASS II	M TON			TON	6270		6270
2562	SIGNS (3)	SM			SF	56		56
2568	MOBILIZATION	LS			LS			1
2569	DEMOBILIZATION	LS			LS			1
2601	FINAL DRESSING CLASS B	M	3331	10928.46	LF	11768		22696.46
2650	MAINTAIN AND CONTROL TRAFFIC (3)	LS			LS			1
2726	STAKING	LS			LS			1
2929	CRASH CUSHION TYPE IX	EACH			EACH	4		4
3171	CONCRETE BARRIER WALL TYPE 9T (1)	M			LF	3700		3700
5966	TOPDRESSING (6)	M TON			TON			0.60
5985	SEEDING AND PROTECTION (6)	SM			SY			9680
6515	PAVEMENT STRIPING - PERM PAINT - 6 INCH	M	28574	93746.53	LF	122539		216285.53
6517	PAVEMENT STRIPING - PERM PAINT - 12 INCH	M	314	1030.18	LF	615		1645.18
6568	PAVEMENT MARKING - THERMO STOP BAR - 24 IN	M	39.6	129.92	LF	46		175.92
6569	PAVEMENT MARKING - THERMO CROSS-HATCH	SM	105.4	1135	SF	2185		3320
6572	PAVEMENT MARKING - DOTTED LANE EXTENSION	M	968	3175.85	LF	4683		7858.85
6574	PAVEMENT MARKING - THERMO CURVE ARROW	EACH	5	5	EACH	12		17
6578	PAVEMENT MARKING - THERMO MERGE ARROW	EACH			EACH	3		3
6589	PAVEMENT MARKER TYPE V - MW (8)	EACH	36	36	EACH	52		88
8100	CONCRETE - CLASS A (5)	CM			CY	15.84		15.84
8150	STEEL REINFORCEMENT (5)	KG			LB	784		784
8903	CRASH CUSHION TYPE VI BT TL3 (1)	EACH			EACH	3		3
10020NS	FUEL ADJUSTMENT	DOLLAR			DOLLAR			30119.00
10030NS	ASPHALT ADJUSTMENT	DOLLAR			DOLLAR			461517.00
20550ND	SAWCUT PAVEMENT (9)	M	118	387.14	LF	261		648.14
21173EC	SAW-CLEAN-RESEAL RANDOM CRACKS (10)	M	67.36	221.00	LF	279		500.00
3202	CONC MEDIAN BARRIER TYPE 14C MODIFIED	M			LF	5920.42		5920.42

- ① CRASH CUSHIONS, BARRICADES, AND WALL USED TO CHANNELIZE TRAFFIC AT KY195 INTERCHANGE TO BE LEFT IN PLACE AND TO BECOME THE PROPERTY OF THE CABINET.
- ② FOR REDRESS / REPLACE AROUND DROP BOX INLETS WHERE GRADING FOR FINAL DRESSING AND BASE STONE WILL DISPLACE. (ESTIMATED AT 10' WIDTH FOR 1% OF FINAL DRESSING)
- ③ FOR MAINTENANCE OF TRAFFIC AT GREASY CREEK RAMP INTERSECTION.
- ④ FOR ACCESS FROM AND MAINTENANCE OF EXISTING ROADS DURING MOBILIZATION.
- ⑤ FOR CONCRETE MEDIAN BARRIER ENDS FOR CRASH CUSHION TYPE IX
- ⑥ ESTIMATED FOR POSSIBLE DISTURBED AREAS AND/OR CORRECTIVE SEEDING
- ⑦ ESTIMATED AT 500 M GAL / MILE
- ⑧ FOR LEFT TURN LANE LOCATIONS ONLY
- ⑨ FOR SQUARING EXISTING PAVEMENT EDGES WHERE PROPOSED PAVEMENT IS TO TIE IN.
- ⑩ FOR PREPARING AND SEALING PAVEMENT CRACKS AND CORE HOLES IN AREAS PREVIOUSLY PAVED

PREPARED BY _____ DATE _____
 CHECKED BY _____ DATE _____
 APPROVED BY _____ DATE _____

Cell Library: PEC-3D.CEL
 Cell Name: PIKEPL
 6-93 FORM NO. 2m

R00205SU.dgn
 1/23/2012

GENERAL SUMMARY

COUNTY OF	ITEM NO.	SHEET NO.
PIKE	12-263.49	R02S

REVISED 01-23-2012

ITEM CODE	ITEM	UNIT	METRIC SECTION		UNIT	ENGLISH SECTION		TOTAL PROJECT
			KY122 BRIDGE TO GREASY CR BRIDGE	(ENGLISH) (EQUIV)		GREASY CR BRIDGE TO KY195		
20	TRAFFICBOUND BASE ④	M TON	50	55.12	TON	50		105.12
1891	ISLAND HEADER CURB TYPE 2	M	22.80	74.80	LF	350		424.80
1982	DELINEATOR FOR GUARDRAIL - WHITE	EACH			EACH	12		12
1983	DELINEATOR FOR GUARDRAIL - YELLOW	EACH	11	11	EACH	10		21
1985	DELINEATOR FOR BARRIER - YELLOW	EACH			EACH	60		60
2014	BARRICADE - TYPE III ①	EACH			EACH	22		22
2242	WATER ⑦	CU M			M GAL			3315
2351	GUARDRAIL STEEL W BEAM SINGLE FACE	M	1653.50	5425.00	LF	15290		20715
2352	GUARDRAIL STEEL W BEAM DOUBLE FACE	M	58.3	191.27	LF	687.50		878.77
2360	GUARDRAIL TERMINAL SECTION NO. 1	EACH	2	2	EACH	6		8
2363	GUARDRAIL CONNECTOR TO BRIDGE END TYPE A	EACH	6	6	EACH	12		18
2365	CRASH CUSHION TYPE IX-A	EACH	1	1	EACH	5		6
2367	GUARDRAIL END TREATMENT TYPE 1	EACH	15	15	EACH	25		40
2369	GUARDRAIL END TREATMENT TYPE 2A	EACH	7	7	EACH	18		25
2371	GUARDRAIL END TREATMENT TYPE 7	EACH	1	1	EACH			1
2387	GUARDRAIL CONNECTOR TO BRIDGE END TYPE A-1	EACH	1	1	EACH	3		4
2483	CHANNEL LINING CLASS II ②	M TON	63.5	70.00	TON	88		158.00
2483	CHANNEL LINING CLASS II	M TON			TON	6270		6270
2562	SIGNS ③	SM			SF	56		56
2568	MOBILIZATION	LS			LS			1
2569	DEMOBILIZATION	LS			LS			1
2601	FINAL DRESSING CLASS B	M	3331	10928.46	LF	11768		22696.46
2650	MAINTAIN AND CONTROL TRAFFIC ③	LS			LS			1
2726	STAKING	LS			LS			1
2929	CRASH CUSHION TYPE IX	EACH			EACH	4		4
3171	CONCRETE BARRIER WALL TYPE 9T ①	M			LF	3700		3700
5966	TOPDRESSING ⑥	M TON			TON			0.60
5985	SEEDING AND PROTECTION ⑥	SM			SY			9680
6515	PAVEMENT STRIPING - PERM PAINT - 6 INCH	M	28574	93746.53	LF	122539		216285.53
6517	PAVEMENT STRIPING - PERM PAINT - 12 INCH	M	314	1030.18	LF	615		1645.18
6568	PAVEMENT MARKING - THERMO STOP BAR - 24 IN	M	39.6	129.92	LF	46		175.92
6569	PAVEMENT MARKING - THERMO CROSS-HATCH	SM	105.4	1135	SF	2185		3320
6572	PAVEMENT MARKING - DOTTED LANE EXTENSION	M	968	3175.85	LF	4683		7858.85
6574	PAVEMENT MARKING - THERMO CURVE ARROW	EACH	5	5	EACH	12		17
6578	PAVEMENT MARKING - THERMO MERGE ARROW	EACH			EACH	3		3
6589	PAVEMENT MARKER TYPE V - MW ⑧	EACH	36	36	EACH	52		88
8100	CONCRETE - CLASS A ⑤	CM			CY	15.84		15.84
8150	STEEL REINFORCEMENT ⑤	KG			LB	784		784
8903	CRASH CUSHION TYPE VI BT TL3 ①	EACH			EACH	3		3
10020NS	FUEL ADJUSTMENT	DOLLAR			DOLLAR			30119.00
10030NS	ASPHALT ADJUSTMENT	DOLLAR			DOLLAR			461517.00
20550ND	SAWCUT PAVEMENT ⑨	M	118	387.14	LF	261		648.14
2173EC	SAW-CLEAN RESEAL RANDOM CRACKS ⑩	M	67.36	221.00	LF	279		500.00
3202	CONC MEDIAN BARRIER TYPE 14C MODIFIED	M			LF	5920.42		5920.42

- ① CRASH CUSHIONS, BARRICADES, AND WALL USED TO CHANNELIZE TRAFFIC AT KY195 INTERCHANGE TO BE LEFT IN PLACE AND TO BECOME THE PROPERTY OF THE CABINET.
- ② FOR REDRESS / REPLACE AROUND DROP BOX INLETS WHERE GRADING FOR FINAL DRESSING AND BASE STONE WILL DISPLACE. (ESTIMATED AT 10' WIDTH FOR 1% OF FINAL DRESSING)
- ③ FOR MAINTENANCE OF TRAFFIC AT GREASY CREEK RAMP INTERSECTION.
- ④ FOR ACCESS FROM AND MAINTENANCE OF EXISTING ROADS DURING MOBILIZATION.
- ⑤ FOR CONCRETE MEDIAN BARRIER ENDS FOR CRASH CUSHION TYPE IX
- ⑥ ESTIMATED FOR POSSIBLE DISTURBED AREAS AND/OR CORRECTIVE SEEDING
- ⑦ ESTIMATED AT 500 M GAL / MILE
- ⑧ FOR LEFT TURN LANE LOCATIONS ONLY
- ⑨ FOR SQUARING EXISTING PAVEMENT EDGES WHERE PROPOSED PAVEMENT IS TO TIE IN.
- ⑩ FOR PREPARING AND SEALING PAVEMENT CRACKS AND CORE HOLES IN AREAS PREVIOUSLY PAVED

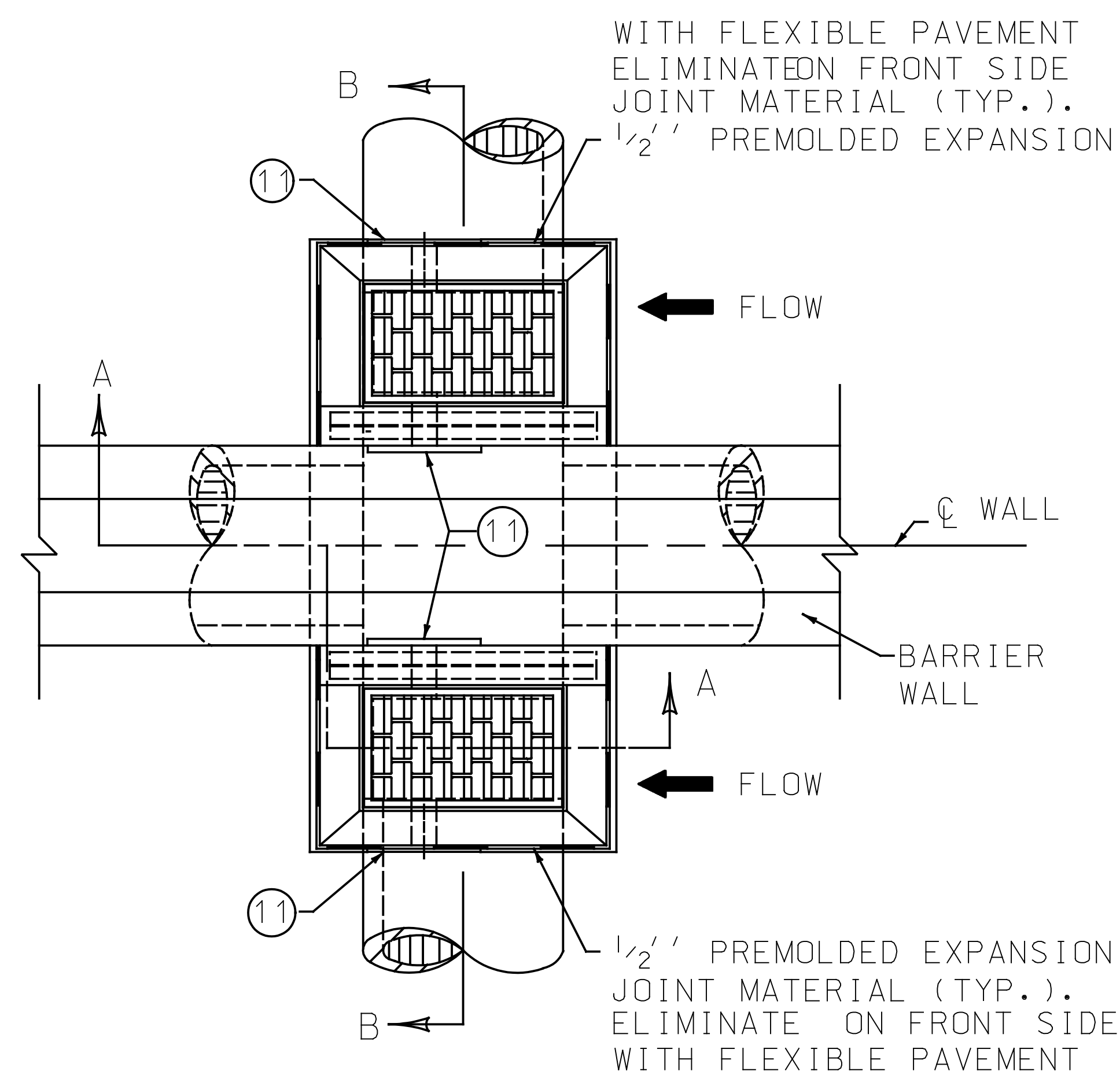
MODIFIED BARRIER BID ITEM NUMBER AND ADDED "MODIFIED" TO NAME

PREPARED BY _____ DATE _____
 CHECKED BY _____ DATE _____
 APPROVED BY _____ DATE _____

Cell Library: PEC-3D.CEL
 Cell Name: PIKEPL

6-93
 FORM NO. 2m

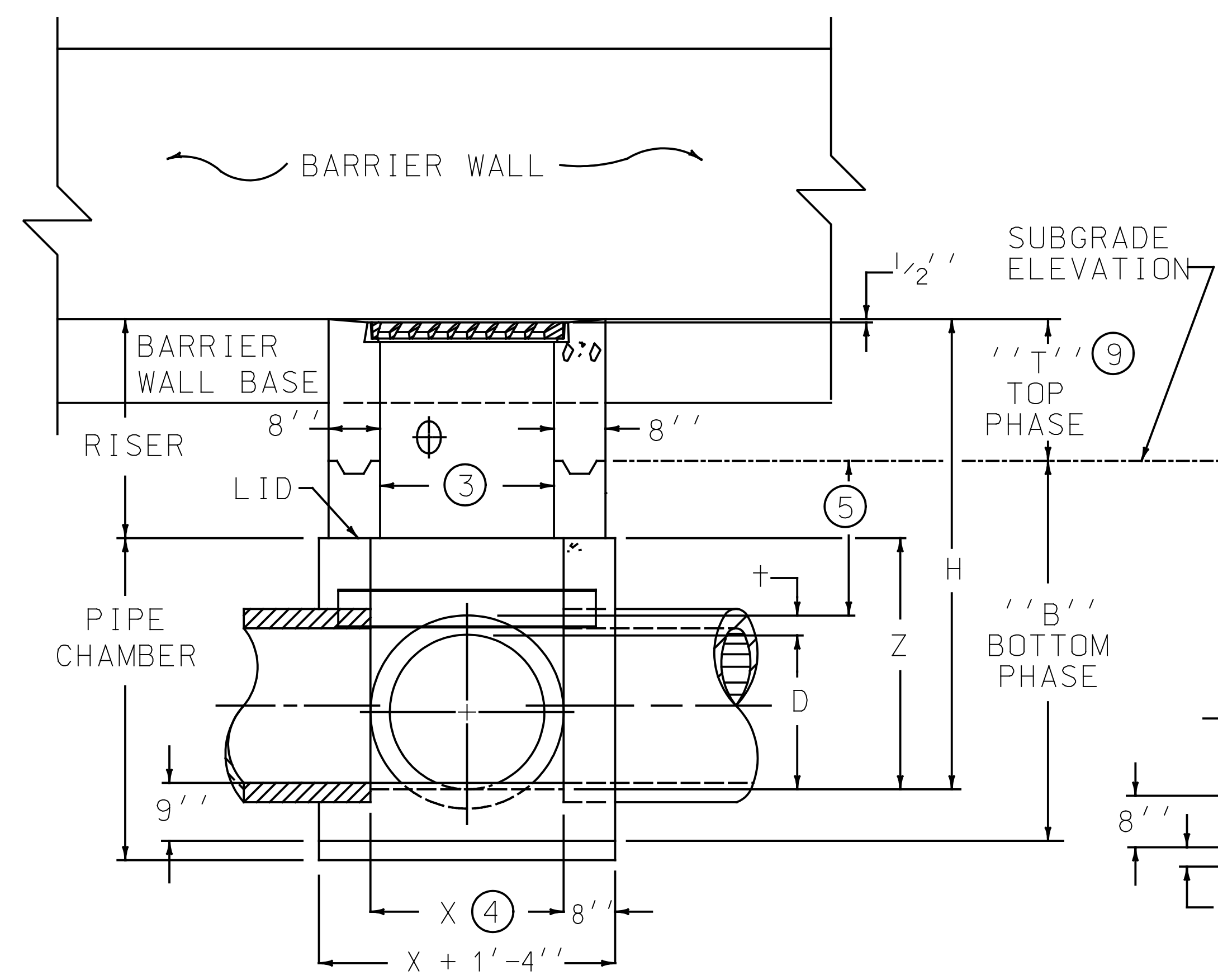
R00205SU.dgn
 1/23/2012



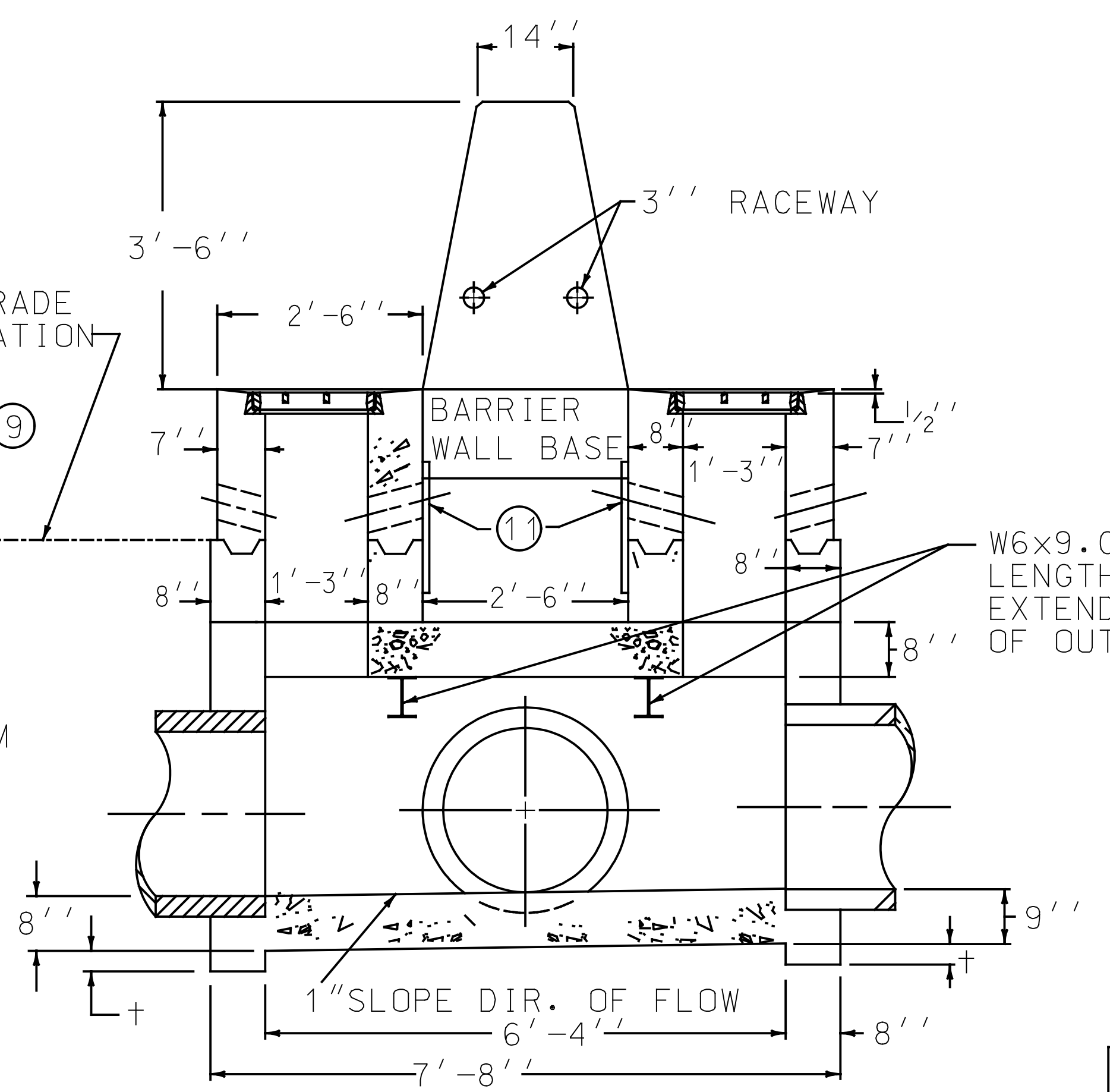
PLAN VIEW

NOTES

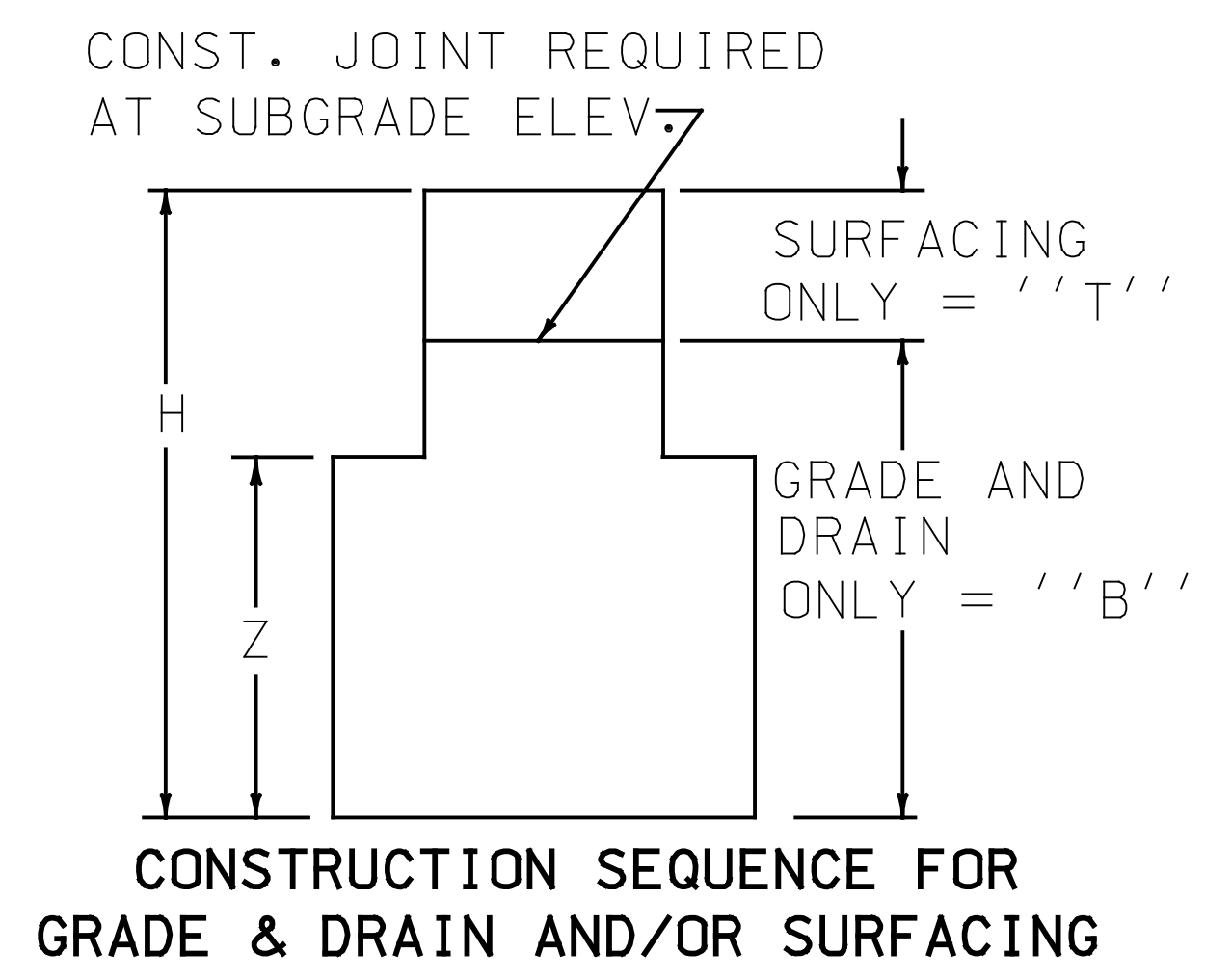
- BOX INLET SHALL BE CONSTRUCTED IN TWO PHASES (BOTTOM AND TOP) AND MAY BE CONSTRUCTED IN A SAG VERTICAL CURVE OR ON GRADE.
 BID ITEM: DROP BOX INLET TYPE 13 (Δ) (*) MOD.
 WITH NO "T" OR "B" SUFFIX A COMPLETE INLET IS REQUIRED.
 (Δ) = "S" (SAG CONDITION)
 (Δ) = "G" (GRADE CONDITION)
 (*) = "T" (TOP PHASE)
 (*) = "B" (BOTTOM PHASE)
- FOR ILLUSTRATION PURPOSES THIS DRAWING DEPICTS A BOX LOCATED ON A GRADE CONDITION. SEE CURRENT STD. DWG. RDB-014, FOR DETAILS OF SAG AND GRADE CONDITIONS.
- DIMENSION VARIES DEPENDING UPON LOCATION OF BOX; GRADE CONDITION = 2'-3'', SAG CONDITION = 4'-11''.
- GRADE CONDITION: X = 2'-3'' MIN. TO 5'-0'' MAX., SAG CONDITION: X = 4'-11''.
- 24'' DESIRED COVER, 12'' MINIMUM COVER OVER PIPE AND/OR LID.
- "t" IS CONCRETE PIPE WALL THICKNESS OR METAL CORRUGATION DEPTH.
- ALL WALLS AND SLABS ARE 8'' THICK UNLESS OTHERWISE SHOWN.
- SEE SHEET 2 OF 2 FOR STEEL PATTERN, DIMENSIONS AND QUANTITIES.
- THE TOP PHASE SHALL BE CAST AFTER THE ADJOINING CURB AND GUTTER HAVE BEEN CAST.
- SEE CURRENT STD. DWG. RDB-014 FOR FRAME AND GRATE DETAIL.
- FABRIC WRAPPED BACKFILL DRAIN, (ONE PER WEEP HOLE).
- CONCRETE SHOWN IS FOR ONE RISER.



SECTION A-A



SECTION B-B



CONSTRUCTION SEQUENCE FOR GRADE & DRAIN AND/OR SURFACING

W6x9.0 GALVANIZED
 LENGTH = X PLUS 10''
 EXTEND TO WITHIN 3''
 OF OUTSIDE FACE

NOT TO SCALE
 USE WITH CURRENT STD. DWG. RDB-014
 KENTUCKY
 DEPARTMENT OF HIGHWAYS

DROP BOX INLET
 TYPE 13 MODIFIED
 SHEET 1 OF 2

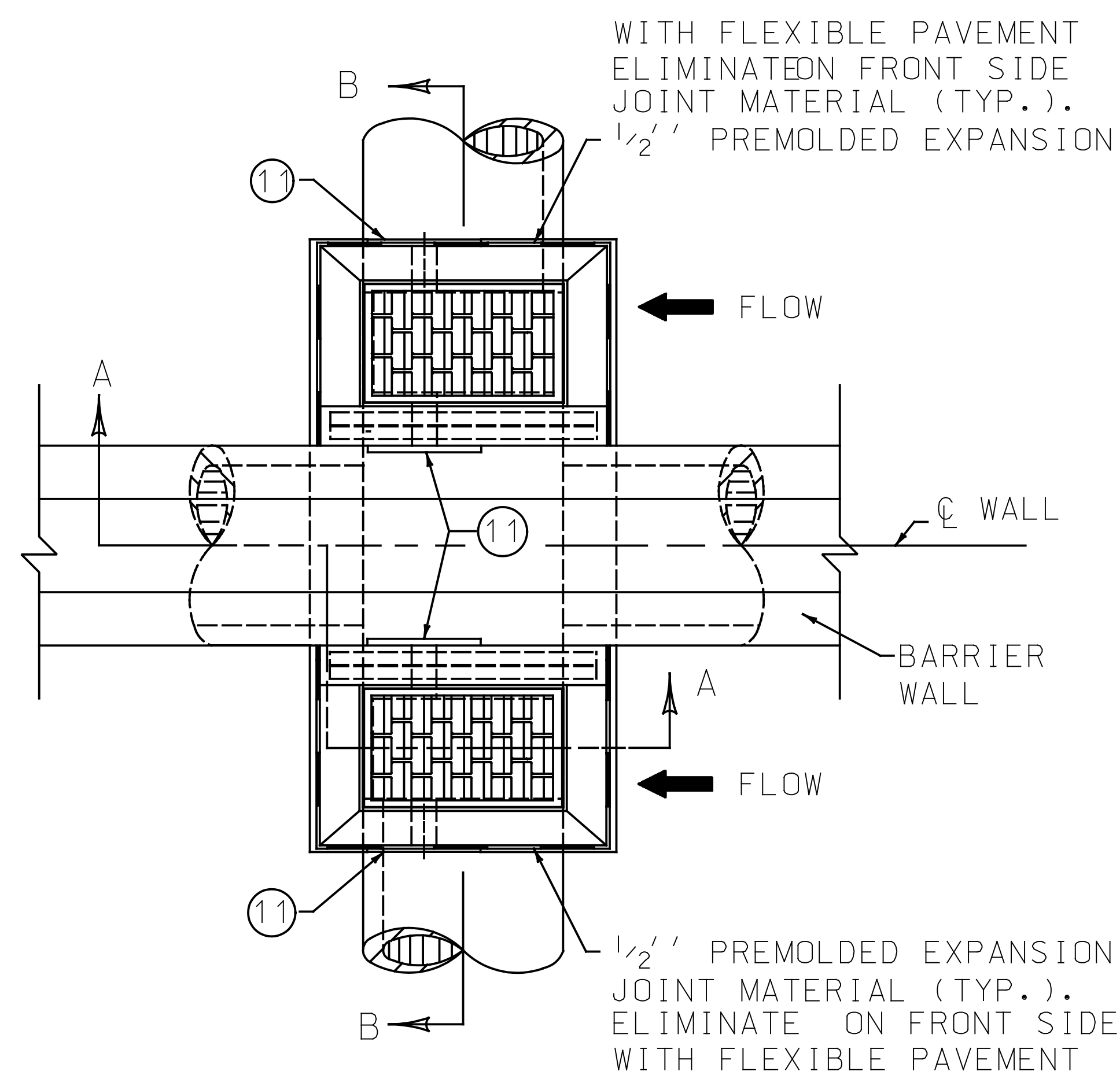
RISER (12)	
CU. YD. CONC. PER FT. HT.	
SAG	0.4
GRADE	0.2

SUBMITTED _____ DATE _____

PREPARED BY _____ DATE _____
 CHECKED BY _____ DATE _____
 APPROVED BY _____ DATE _____

Cell Library: PEC-3D.CEL
 Cell Name: PIKEPL
 1/23/2012
 6-93 FORM NO. 2m
 R118000S.dgn

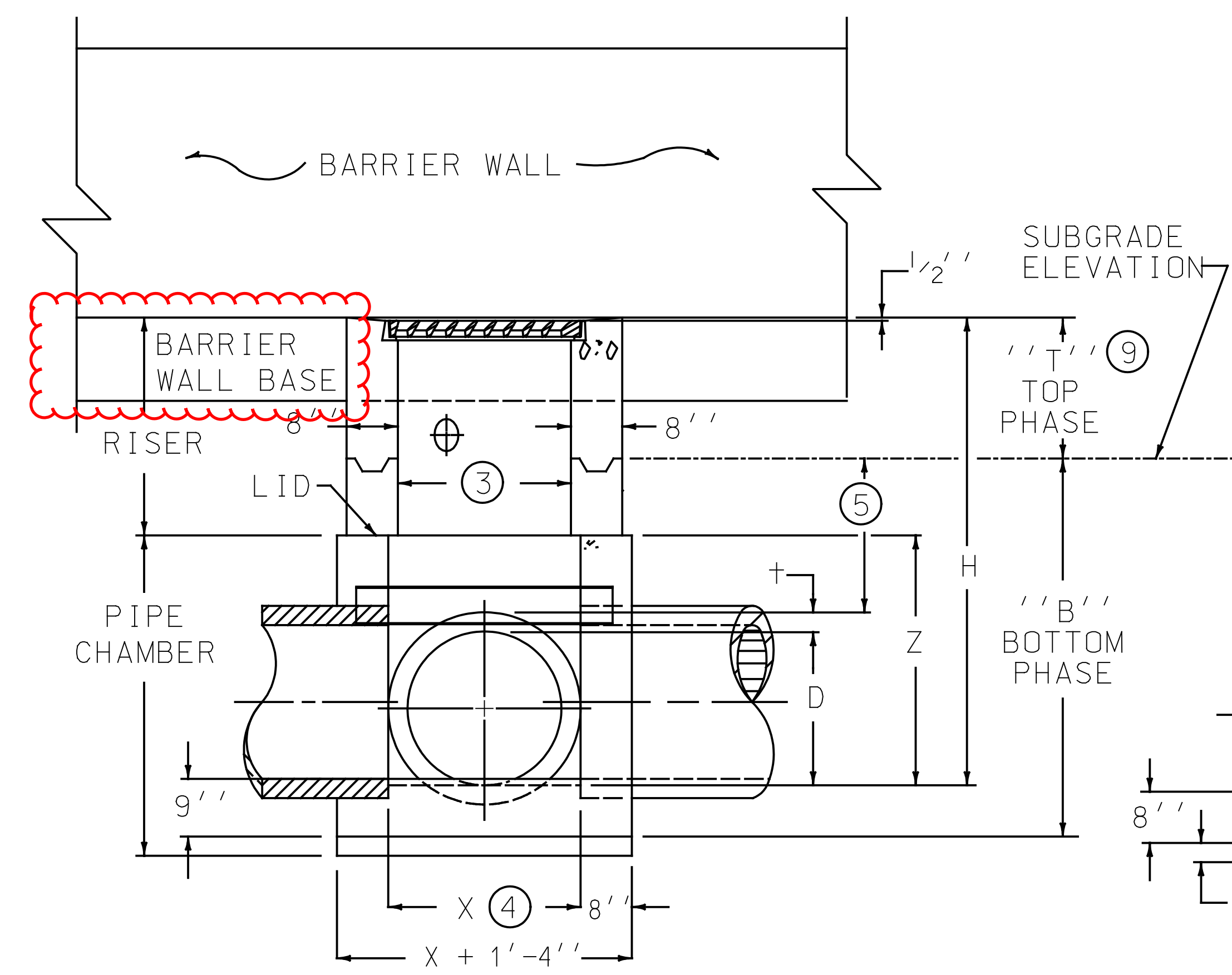
REVISÉD 01-23-2012



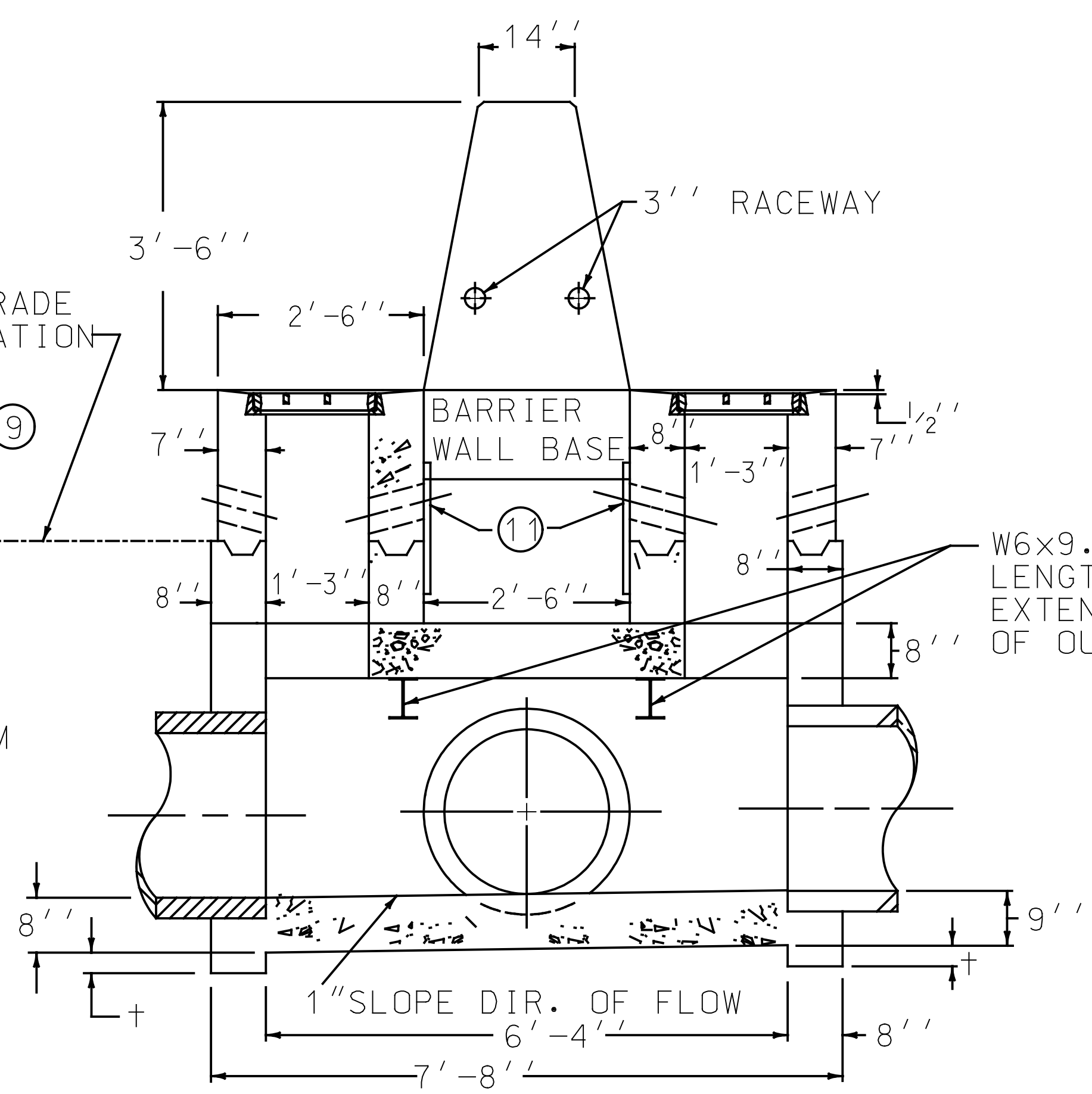
PLAN VIEW

NOTES

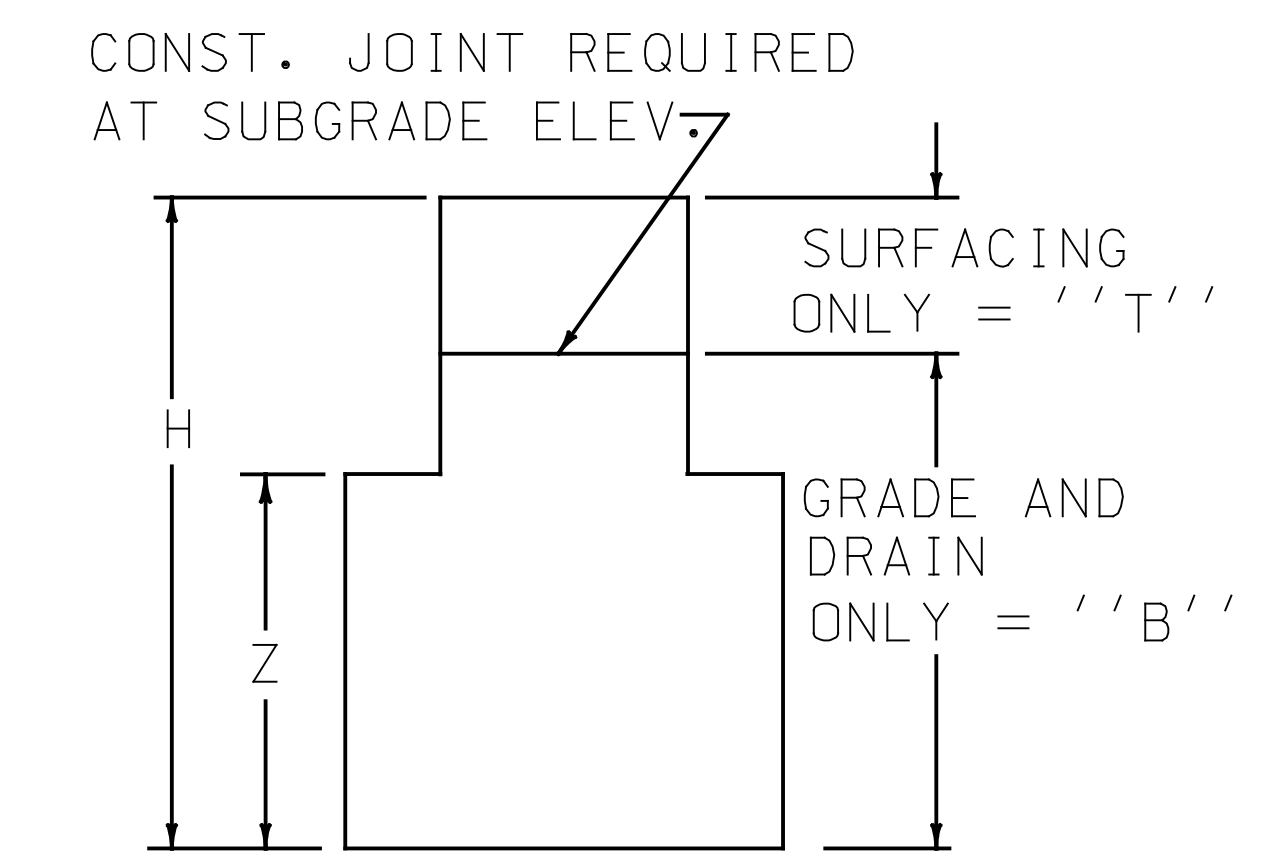
- BOX INLET SHALL BE CONSTRUCTED IN TWO PHASES (BOTTOM AND TOP) AND MAY BE CONSTRUCTED IN A SAG VERTICAL CURVE OR ON GRADE.
 BID ITEM: DROP BOX INLET TYPE 13 (Δ) (*) MOD.
 WITH NO "T" OR "B" SUFFIX A COMPLETE INLET IS REQUIRED.
 (Δ) = "S" (SAG CONDITION)
 (Δ) = "G" (GRADE CONDITION)
 (*) = "T" (TOP PHASE)
 (*) = "B" (BOTTOM PHASE)
- FOR ILLUSTRATION PURPOSES THIS DRAWING DEPICTS A BOX LOCATED ON A GRADE CONDITION. SEE CURRENT STD. DWG. RDB-014, FOR DETAILS OF SAG AND GRADE CONDITIONS.
- DIMENSION VARIES DEPENDING UPON LOCATION OF BOX; GRADE CONDITION = 2'-3'', SAG CONDITION = 4'-11''.
- GRADE CONDITION: X = 2'-3'' MIN. TO 5'-0'' MAX., SAG CONDITION: X = 4'-11''.
- 24'' DESIRED COVER, 12'' MINIMUM COVER OVER PIPE AND/OR LID.
- "t" IS CONCRETE PIPE WALL THICKNESS OR METAL CORRUGATION DEPTH.
- ALL WALLS AND SLABS ARE 8'' THICK UNLESS OTHERWISE SHOWN.
- SEE SHEET 2 OF 2 FOR STEEL PATTERN, DIMENSIONS AND QUANTITIES.
- THE TOP PHASE SHALL BE CAST AFTER THE ADJOINING CURB AND GUTTER HAVE BEEN CAST.
- SEE CURRENT STD. DWG. RDB-014 FOR FRAME AND GRATE DETAIL.
- FABRIC WRAPPED BACKFILL DRAIN, (ONE PER WEEP HOLE).
- CONCRETE SHOWN IS FOR ONE RISER.



SECTION A-A



SECTION B-B



CONSTRUCTION SEQUENCE FOR GRADE & DRAIN AND/OR SURFACING

ELIMINATED BARRIER BASE DIMENSION

W6x9.0 GALVANIZED
 LENGTH = X PLUS 10''
 EXTEND TO WITHIN 3''
 OF OUTSIDE FACE

NOT TO SCALE
 USE WITH CURRENT STD. DWG. RDB-014

KENTUCKY
 DEPARTMENT OF HIGHWAYS

DROP BOX INLET
 TYPE 13 MODIFIED
 SHEET 1 OF 2

RISER (12)	
CU. YD. CONC. PER FT. HT.	
SAG	0.4
GRADE	0.2

SUBMITTED _____ DATE _____

PREPARED BY _____ DATE _____
 CHECKED BY _____ DATE _____
 APPROVED BY _____ DATE _____

Cell Library: PEC-3D.CEL
 Cell Name: PIKEPL
 6-93 FORM NO. 2m
 1/23/2012
 R118000S.dgn

1/3/2012
Pike County, US 460
Surfacing, Sections 1, 2, 3, 4A, 4B and 5
Item # 12-263.49

The completion date for the above referenced project will be May 15, 2014.

It is the desire of KYTC to open US 460 (temporarily KY 3174) from US 23 to KY 195 at Marrowbone by 12-31-2013. The additional time after 11-15-2013 is to allow the contractor time to complete any non-asphalt items (lighting, signage, etc).

Currently, Sections 2, 3 and 5 are under construction. Bizzack Construction LLC has the grade and drain contract on Sections 2 and 3 and Elmo Greer and Sons LLC has the grade and drain contract on Section 5. It is anticipated that these project sections will be complete in time to allow the asphalt portion of this contract to be completed during the 2013 construction season. In the event that the surfacing contractor is delayed by the aforementioned grade and drain contractors, the Resident Engineer will adjust the completion date accordingly. The surfacing contractor will not be allowed to seek any additional compensation / damages from KYTC in the event these Sections are not ready for asphalt surfacing in the 2013 construction season. It is goal to have pavement in place prior to Jan. 2014 and all other items completed by the completion date of May 15, 2014.

CONTRACT ID: 121001
COUNTY: PIKE
PROPOSAL: APD 0806(040)

PAGE: 1
LETTING: 01/27/12
CALL NO: 102

LINE NO	ITEM	DESCRIPTION	APPROXIMATE QUANTITY	UNIT	UNIT PRICE	AMOUNT
SECTION 0001 ROADWAY						
0010	00003	CRUSHED STONE BASE	123,304.000	TON		
0020	00020	TRAFFIC BOUND BASE	105.120	TON		
0030	00100	ASPHALT SEAL AGGREGATE	731.800	TON		
0040	00205	CL3 ASPH BASE 1.50D PG64-22	8,673.000	TON		
0050	00208	CL4 ASPH BASE 1.50D PG64-22	22,406.000	TON		
0060	00212	CL2 ASPH BASE 1.00D PG64-22	43,323.000	TON		
0070	00214	CL3 ASPH BASE 1.00D PG64-22	62,786.000	TON		
0080	00219	CL4 ASPH BASE 1.00D PG76-22	7,145.000	TON		
0090	00221	CL2 ASPH BASE 0.75D PG64-22	5,448.000	TON		
0100	00291	EMULSIFIED ASPHALT RS-2	88.300	TON		
0110	00301	CL2 ASPH SURF 0.38D PG64-22	5,771.100	TON		
0120	00337	CL4 ASPH SURF 0.38B PG76-22	3,781.000	TON		
0130	00339	CL3 ASPH SURF 0.38D PG64-22	1,164.000	TON		
0140	00395	CL3 SMA BASE 1.00D PG76-22	21,843.000	TON		
0150	00397	CL3 SMA SURF 0.38A PG76-22	9,038.000	TON		
0160	01891	ISLAND HEADER CURB TYPE 2	424.800	LF		
0170	01982	DELINEATOR FOR GUARDRAIL-WHITE	12.000	EACH		
0180	01983	DELINEATOR FOR GUARDRAIL-YELLOW	21.000	EACH		
0190	01985	DELINEATOR FOR BARRIER - YELLOW	60.000	EACH		
0200	02014	BARRICADE-TYPE III	22.000	EACH		

CONTRACT ID: 121001
COUNTY: PIKE
PROPOSAL: APD 0806(040)

PAGE: 2
LETTING: 01/27/12
CALL NO: 102

LINE NO	ITEM	DESCRIPTION	APPROXIMATE QUANTITY	UNIT	UNIT PRICE	AMOUNT
0210	02242	WATER	3,315.000	MGAL		
0220	02351	GUARDRAIL-STEEL W BEAM-S FACE	20,715.000	LF		
0230	02352	GUARDRAIL-STEEL W BEAM-D FACE	878.770	LF		
0240	02360	GUARDRAIL TERMINAL SECTION NO 1	8.000	EACH		
0250	02363	GUARDRAIL CONNECTOR TO BRIDGE END TY A	18.000	EACH		
0260	02365	CRASH CUSHION TYPE IX-A	6.000	EACH		
0270	02367	GUARDRAIL END TREATMENT TYPE 1	40.000	EACH		
0280	02369	GUARDRAIL END TREATMENT TYPE 2A	25.000	EACH		
0290	02371	GUARDRAIL END TREATMENT TYPE 7	1.000	EACH		
0300	02387	GUARDRAIL CONNECTOR TO BRIDGE END TY A-1	3.000	EACH		
0310	02483	CHANNEL LINING CLASS II	6,270.000	TON		
0320	02483	CHANNEL LINING CLASS II FOR DROP BOX INLETS	158.000	TON		
0330	02562	SIGNS	56.000	SQFT		
0340	02601	FINAL DRESSING CLASS B	22,696.460	LF		
0350	02650	MAINTAIN & CONTROL TRAFFIC	(1.00)	LS		
0360	02726	STAKING	(1.00)	LS		
0370	02929	CRASH CUSHION TYPE IX	4.000	EACH		
0380	03171	CONCRETE BARRIER WALL TYPE 9T	3,700.000	LF		
0390	05966	TOPDRESSING FERTILIZER	0.600	TON		
0400	05985	SEEDING AND PROTECTION	9,680.000	SQYD		
0410	06515	PAVE STRIPING-PERM PAINT-6 IN	216,285.530	LF		

CONTRACT ID: 121001
COUNTY: PIKE
PROPOSAL: APD 0806(040)

PAGE: 3
LETTING: 01/27/12
CALL NO: 102

LINE NO	ITEM	DESCRIPTION	APPROXIMATE QUANTITY	UNIT	UNIT PRICE	AMOUNT
0420	06517	PAVE STRIPING-PERM PAINT-12 IN	1,645.180	LF		
0430	06568	PAVE MARKING-THERMO STOP BAR-24IN	175.920	LF		
0440	06569	PAVE MARKING-THERMO CROSS-HATCH	3,320.000	SQFT		
0450	06572	PAVE MARKING-DOTTED LANE EXTEN	7,858.850	LF		
0460	06574	PAVE MARKING-THERMO CURV ARROW	17.000	EACH		
0470	06578	PAVE MARKING-THERMO MERGE ARROW	3.000	EACH		
0480	06589	PAVEMENT MARKER TYPE V-MW	88.000	EACH		
0490	08100	CONCRETE-CLASS A	15.840	CUYD		
0500	08150	STEEL REINFORCEMENT	784.000	LB		
0510	08903	CRASH CUSHION TY VI CLASS BT TL3	3.000	EACH		
0520	10020NS	FUEL ADJUSTMENT	301,119.000	DOLL	1.00	301,119.00
0530	10030NS	ASPHALT ADJUSTMENT	461,517.000	DOLL	1.00	461,517.00
0540	20550ND	SAWCUT PAVEMENT	648.140	LF		
0550	20569ES710	DROP BOX INLET TY 13G(MOD)	22.000	EACH		
0560	20570ES710	DROP BOX INLET TY 13S(MOD)	1.000	EACH		
0570	21173EC	SAW-CLEAN-RESEAL RANDOM CRACKS	500.000	LF		
0580	03202	CONC MEDIAN BARRIER TYPE 14C MOD (REVISED: 1-25-12)	5,920.420	LF		
SECTION 0002 SIGNING						
0590	04904	BARRIER MOUNTING BRACKET	6.000	EACH		
0600	06400	GMSS GALV STEEL TYPE A	22,407.000	LB		
0610	06405	SBM ALUMINUM PANEL SIGNS	4,516.100	SQFT		

CONTRACT ID: 121001
COUNTY: PIKE
PROPOSAL: APD 0806(040)

PAGE: 4
LETTING: 01/27/12
CALL NO: 102

LINE NO	ITEM	DESCRIPTION	APPROXIMATE QUANTITY	UNIT	UNIT PRICE	AMOUNT
0620	06406	SBM ALUM SHEET SIGNS .080 IN	1,273.300	SQFT		
0630	06407	SBM ALUM SHEET SIGNS .125 IN	1,016.500	SQFT		
0640	06410	STEEL POST TYPE 1	1,457.000	LF		
0650	06411	STEEL POST TYPE 2	4,495.000	LF		
0660	06417	FLEXIBLE DELINEATOR POST-W	908.000	EACH		
0670	06418	FLEXIBLE DELINEATOR POST-Y	729.000	EACH		
0671	06422	OSS ALUMINUM 60 FT TRUSS (ADDED: 1-17-12)	2.000	EACH		
0680	06426	OSS ALUMINUM 70 FT TRUSS (REVISED: 1-17-12)	1.000	EACH		
0690	06441	GMSS GALV STEEL TYPE C	8,619.000	LB		
0700	06490	CLASS A CONCRETE FOR SIGNS	133.100	CUYD		
0710	06491	STEEL REINFORCEMENT FOR SIGNS	5,911.000	LB		
0720	20419ND	ROADWAY CROSS SECTION	23.000	EACH		
0730	20912ND	BARRIER WALL POST	6.000	EACH		
0740	21596ND	GMSS TYPE D	19.000	EACH		
SECTION 0003 LIGHTING						
0750	04701	POLE 40 FT MTG HT	3.000	EACH		
0760	04714	POLE 120 FT MTG HT HIGH MAST	5.000	EACH		
0770	04722	BRACKET 8 FT	2.000	EACH		
0780	04725	BRACKET 15 FT	1.000	EACH		
0790	04740	POLE BASE	3.000	EACH		
0800	04750	TRANSFORMER BASE	3.000	EACH		

CONTRACT ID: 121001
 COUNTY: PIKE
 PROPOSAL: APD 0806(040)

PAGE: 5
 LETTING: 01/27/12
 CALL NO: 102

LINE NO	ITEM	DESCRIPTION	APPROXIMATE QUANTITY	UNIT	UNIT PRICE	AMOUNT
0810	04760	POLE W/SECONDARY CONTROL EQUIP	4.000	EACH		
0820	04770	HPS LUMINAIRE	3.000	EACH		
0830	04773	HPS LUMINAIRE HIGH MAST	24.000	EACH		
0840	04780	FUSED CONNECTOR KIT	6.000	EACH		
0850	04793	CONDUIT-1 1/4 IN	450.000	LF		
0860	04797	CONDUIT-3 IN	1,590.000	LF		
0870	04820	TRENCHING AND BACKFILLING	1,870.000	LF		
0880	04832	WIRE-NO. 12	471.000	LF		
0890	04833	WIRE-NO. 8	6,690.000	LF		
0900	20391NS835	JUNCTION BOX TYPE A	5.000	EACH		
0910	21543EN	BORE AND JACK CONDUIT	170.000	LF		
0920	23161EN	POLE BASE-HIGH MAST	46.520	CUYD		
SECTION 0004 MOB AND DEMOB						
0930	02568	MOBILIZATION (NO MORE THAN 5%)		LUMP		
0940	02569	DEMOBILIZATION (AT LEAST 1.5%)		LUMP		
		TOTAL BID				